

# Chip Tuner Quickstart

by Dipl. Ing. (FH) J. Ruhländer



With the new product in your hands, you probably don't want pages upon pages of dry reading. You want a short and sweet presentation of the information required to start using the Chip Tuner module. This document explains how to install your new Prog-Express add-on module on your PC quickly and easily, and how to use it.

Don't be afraid to skip over points which you already understand very well.

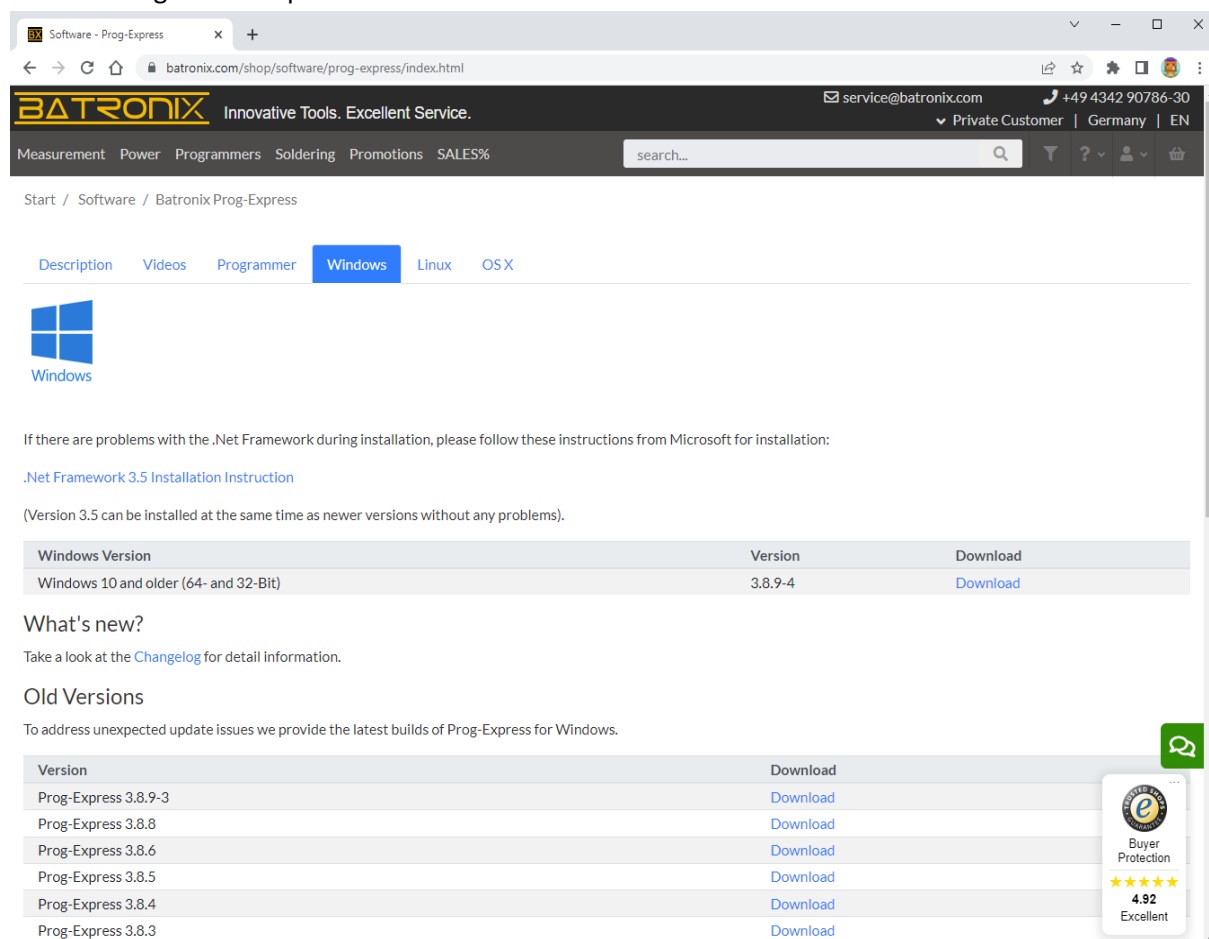
## Steps for quick start up

1. Loading Prog-Express (Alternative: Installation media, e.g. CD)
2. Installing Prog-Express
3. Chip Tuner registration and activation
4. Using the new tools

## Loading Prog-Express

The Prog-Express software must be installed on your PC in order to use the Chip Tuner. To do so, you need a current version of Prog-Express. If you have installed it already, skip to "Chip Tuner Registration and Activation".

Downloading is the simplest and recommended method.



Software - Prog-Express

batronix.com/shop/software/prog-express/index.html

**BATRONIX** Innovative Tools. Excellent Service.

service@batronix.com +49 4342 90786-30


Private Customer | Germany | EN

Measurement Power Programmers Soldering Promotions SALES%

search...

Start / Software / Batronix Prog-Express

Description Videos Programmer **Windows** Linux OSX

  
Windows

If there are problems with the .Net Framework during installation, please follow these instructions from Microsoft for installation:  
[.Net Framework 3.5 Installation Instruction](#)

(Version 3.5 can be installed at the same time as newer versions without any problems).

Windows Version	Version	Download
Windows 10 and older (64- and 32-Bit)	3.8.9-4	<a href="#">Download</a>

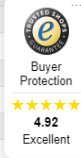
What's new?

Take a look at the [Changelog](#) for detail information.

Old Versions

To address unexpected update issues we provide the latest builds of Prog-Express for Windows.

Version	Download
Prog-Express 3.8.9-3	<a href="#">Download</a>
Prog-Express 3.8.8	<a href="#">Download</a>
Prog-Express 3.8.6	<a href="#">Download</a>
Prog-Express 3.8.5	<a href="#">Download</a>
Prog-Express 3.8.4	<a href="#">Download</a>
Prog-Express 3.8.3	<a href="#">Download</a>

  
Buyer Protection  
★★★★★  
4.92  
Excellent


The [latest version](#) is always available on our [website](#) in the download area. The full address is:  
<http://www.batronix.com>.

You can also run the setup from installation media if it is available. If applicable, check whether the version at hand is still current.

If you currently don't have internet access and also don't have installation media, then you can order installation media from our service department for a small shipping fee.

Our full contact address is found at the end of this manual in the appendix.

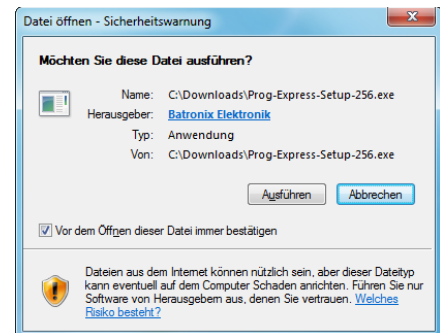
## Installing Prog-Express

Open a Windows Explorer  session and browse to the Prog-Express Setup file. The file you need is called **Prog-Express-Setup-xxx.exe**. The xxx refers to the version number.

**Step 1 (Vista and higher): Give the program which was downloaded from the internet permission to run.**

Windows (Vista and higher) displays a safety warning as soon as the setup file is run by double-clicking on it. This warning is always displayed automatically when you run a program that was downloaded from the internet.

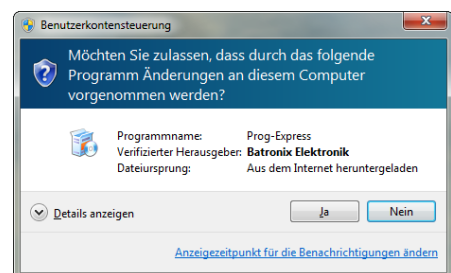
Click on **“Run”**.



**Step 2 (Vista and higher): Allow setup to make changes to the PC.**

Your permission is required if a program requires administrator rights. If applicable, check the validity of our certificate in order to ensure that you have received a setup file from us.

Click on **“Yes”**.



**Step 3: Select your preferred language**

Our setup features a choice of languages. Click directly on OK if you prefer German. Otherwise you can select your preferred language from the drop-down list.

Click on **“OK”**.



#### Step 4: Welcome

This is the first setup step. It gives you some general information about the pending setup.

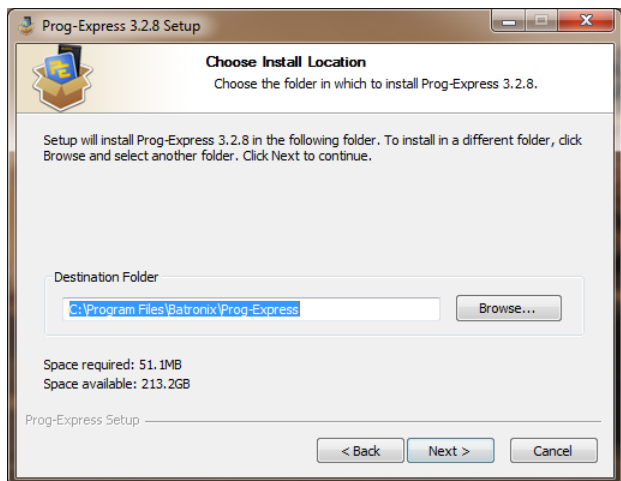
Click on “Continue”.



#### Step 5: Select the destination folder

Select the installation destination on this page. The main program files are installed in the selected folder.

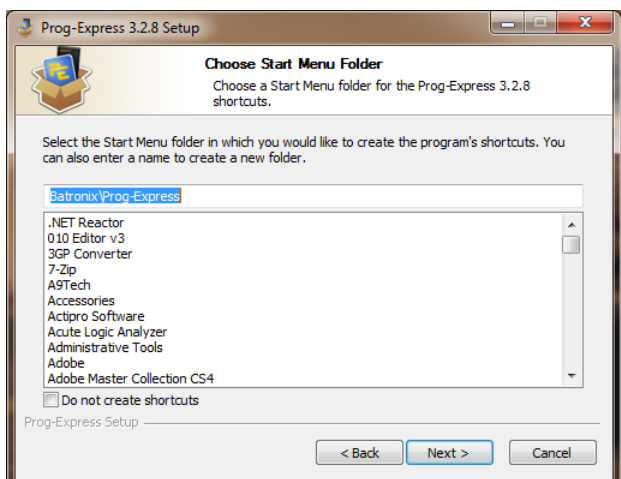
Click on “Continue”.



#### Step 6: Select the program shortcuts folder

Shortcuts are created in the start menu so that Prog-Express can be accessed easily. These include a link to open Prog-Express, but also links to the manual and to the uninstall program.

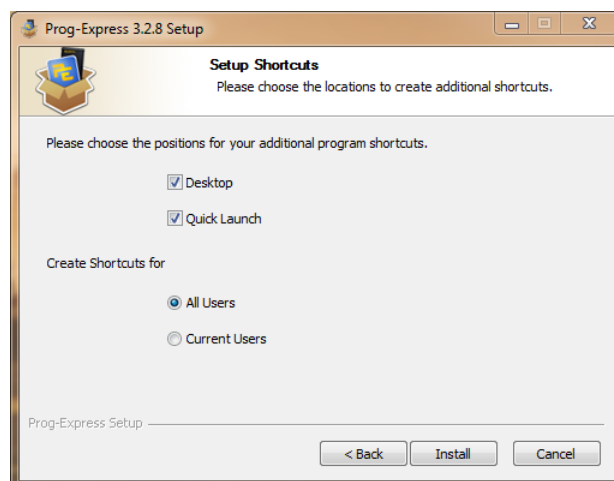
Click on “Continue”.



### Step 7: Select additional shortcuts

In this screen, you can select whether additional Prog-Express shortcuts should be placed on the desktop or the quick-launch bar. You also have the option of creating these for all users of the PC.

Click on **“Install”**.



### Step 7b: Device driver installation

As a rule, the Prog-Express product also includes programming devices which are connected to the PC via the USB interface. The device drivers must be installed so that these devices are detected properly when they are connected to the computer. This step is performed at the same time as the Prog-Express installation. The device driver installation runs completely automatically and closes on its own when done.



### Step 8: Message indicating that setup was completed successfully

This final page lets you know that setup was completed successfully. If you don't want Prog-Express to open when you click on **“Finish”**, please clear the checkmark.

Click on **“Finish”**.

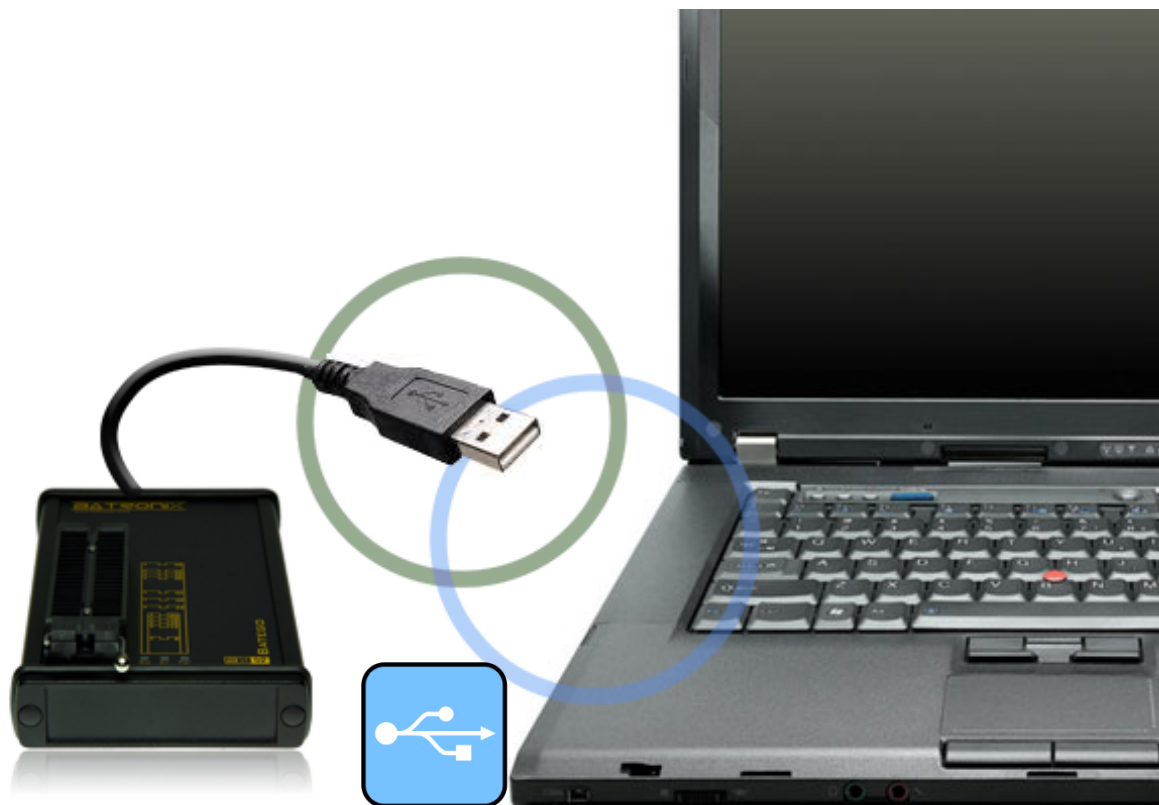


## Chip Tuner registration and activation

Once you have successfully installed Prog-Express on your PC, you can register and activate the Chip Tuner module. The Chip Tuner can be used immediately after this step.

### Step 1: Connect your programming device

If you own the standalone version of the Chip Tuner, you don't need a programming device and can continue to **Step 2: Open Prog-Express**.

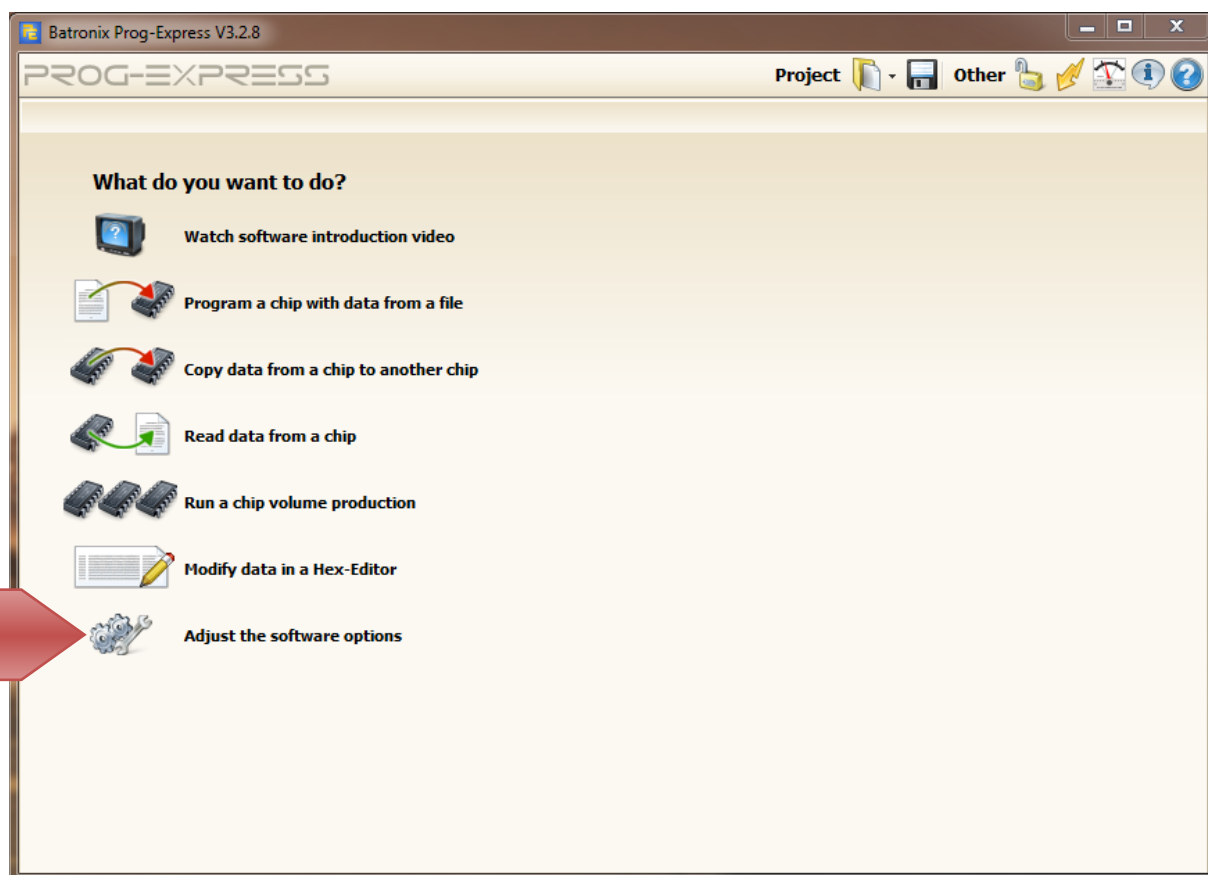


Connect your programming device to a free USB port on your computer. The Chip Tuner polls the programming device when the software starts. You cannot use the “Bundle Version” of the Chip Tuner if a suitable programming device is not connected to the PC.

You don't need to perform any further steps if you own a **Batronix BX48 Batego**. For Batego owners, the Chip Tuner module is automatically registered and activated every time the program is run. In this case, skip to **Using the new features**.

For customers who have purchased the BX32-BX40 + Chip Tuner programming device bundle, continue with **Step 2 Starting Prog-Express**.

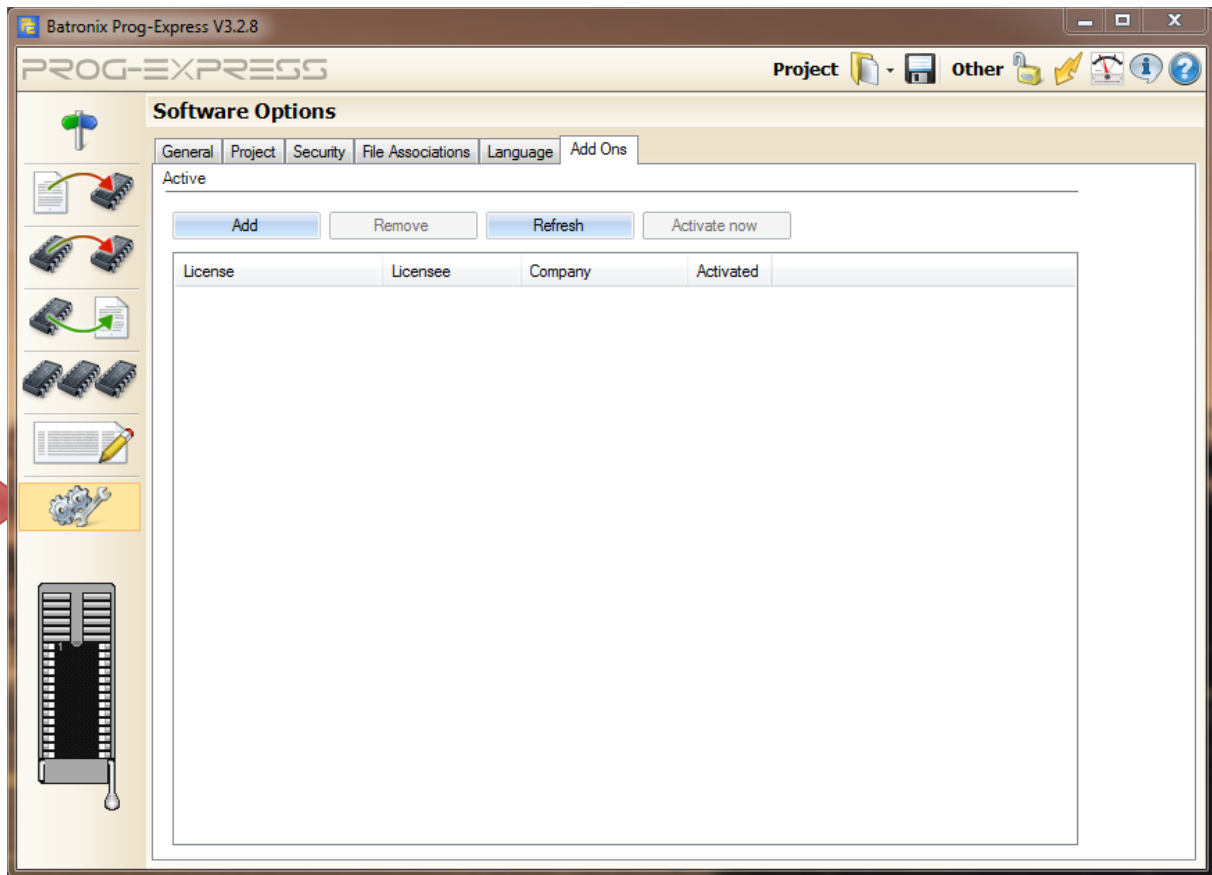
## Step 2: Starting Prog-Express



Open the Prog-Express **Software Options**.

### Step 3: Add the Chip Tuner module

Select the Prog-Express options in the add-on modules tab. In the list of active add-on modules, click on **"Add"**.





#### Step 4: Complete the form

Complete all fields in this form. Enter the license data from your license sheet in the product key field. Then click on **“Register product”**.

**Welcome!**  
Thank you for helping us to develop a better products for your needs.  
To verify your identity and to unlock your purchased Batronix product you have to enter your personal product-key you've got delivered together with this product.

Name:  
Max

Company:  
Testing

\* Product Key:  
[ ][ ][ ][ ][ ]

Register product key Cancel

## Step 5: Activating the Chip Tuner

Now the Chip Tuner is basically ready to use. In order to prevent the illegal duplication of licenses, the license must be activated immediately.

The screenshot shows the 'Software Options' dialog box in Batronix Prog-Express V3.2.8. The 'Active' tab is selected, showing a list of installed modules. The 'Chip-Tuner (Standalone)' module is highlighted. A red arrow points from this module to a license activation card.

**Batronix Prog-Express V3.2.8**

**Software Options**

General Project Security File Associations Language

Active

Add Remove Refresh

License	Licensee	Company
Chip-Tuner (Standalone)	Max	Testing

**Ihre Lizenzdaten**

Chip-Tuner Standalone

XXXXX-XXXXX-XXXXX-XXXXX-XXXXX

Bitte bewahren Sie dieses Lizenzblatt gut auf! Sie benötigen es für eine Neuinstallation und für gewisse Aktualisierungen des Produkts.

**Batronix Elektronik**  
Lise-Meiner-Str. 1-7  
24223 Schwanenknäuel  
Deutschland  
service@batronix.com  
Tel: +49 4307 8243 20  
Fax: +49 4307 8243 30

Inhaber: Dipl. Ing. André Bauer  
Steuernummer: 20 103 00004  
UmsID (VAT): DEB13332287  
WEEE-Reg.-Nr.: DE47592110  
www.batronix.com  
www.progshop.com  
www.progforum.com

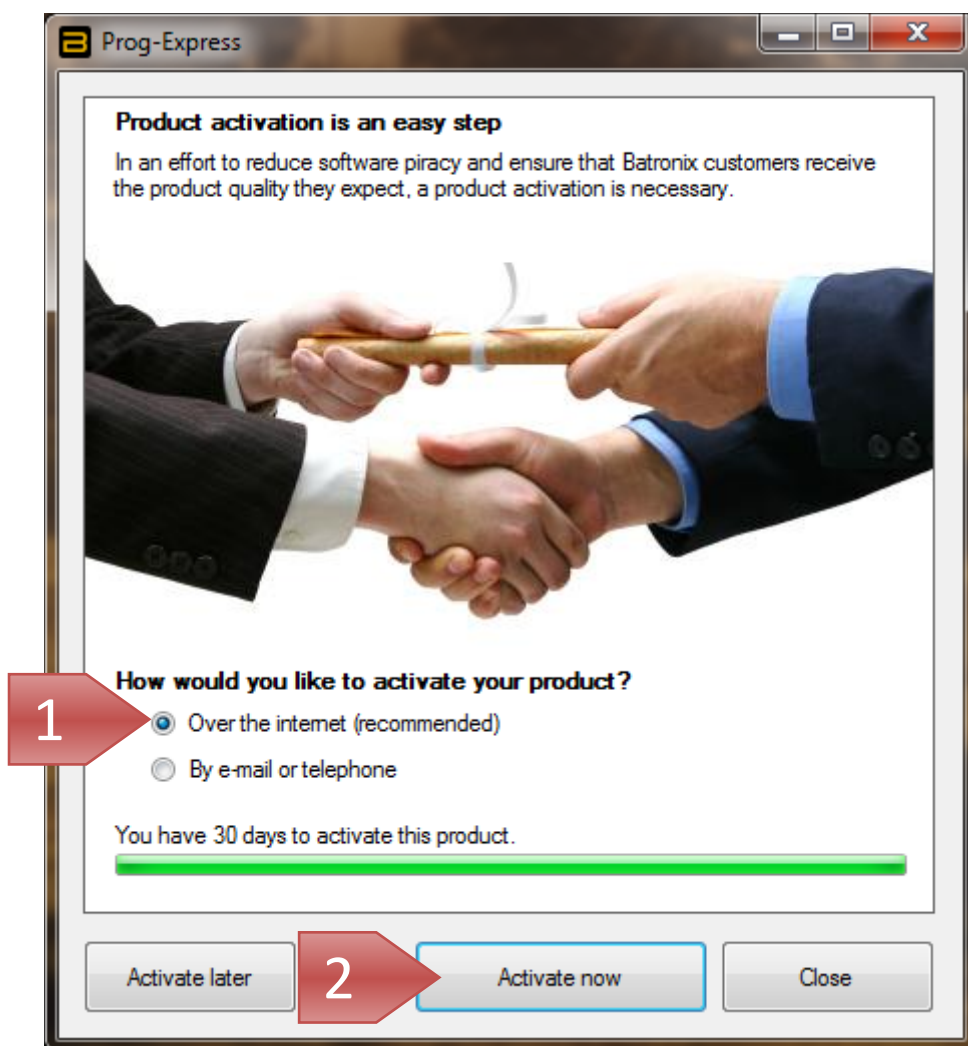
Bankverbindung für Euro (€) Zahlungen:  
Postbank Hamburg, BLZ: 25010020, Konto: 704508204  
SWIFT: PBNKDE33, IBAN: DE00 25010020 0704508204

Bankverbindung für USD (\$) Zahlungen:  
Postbank Saarbrücken, BLZ: 50010000, Konto: 0000224008  
SWIFT: PBNKDE33, IBAN: DE03 50010000 0000224008

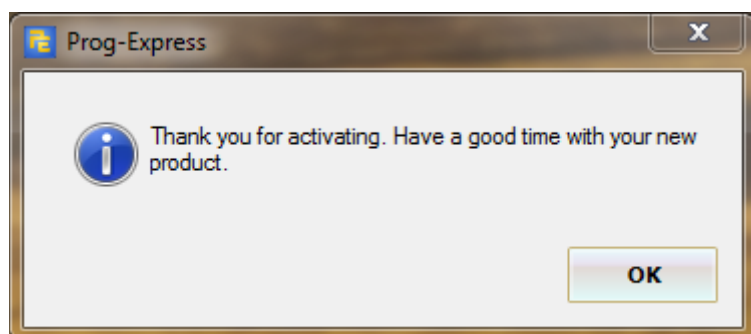
Select the Chip Tuner module from the list and click on **“Activate now”**.

You can activate the module directly, easily, and completely automatically via the internet or you can obtain an activation number from our service department. We recommend fully automatic activation via the internet.

Registration over the phone is not described in this manual. But this method is also fairly easy. Please contact one of our service associates if you have questions about telephone activation. See the appendix or the activation screen for the corresponding contact information.



Ensure that you have an active internet connection and click on **“Activate now”**.

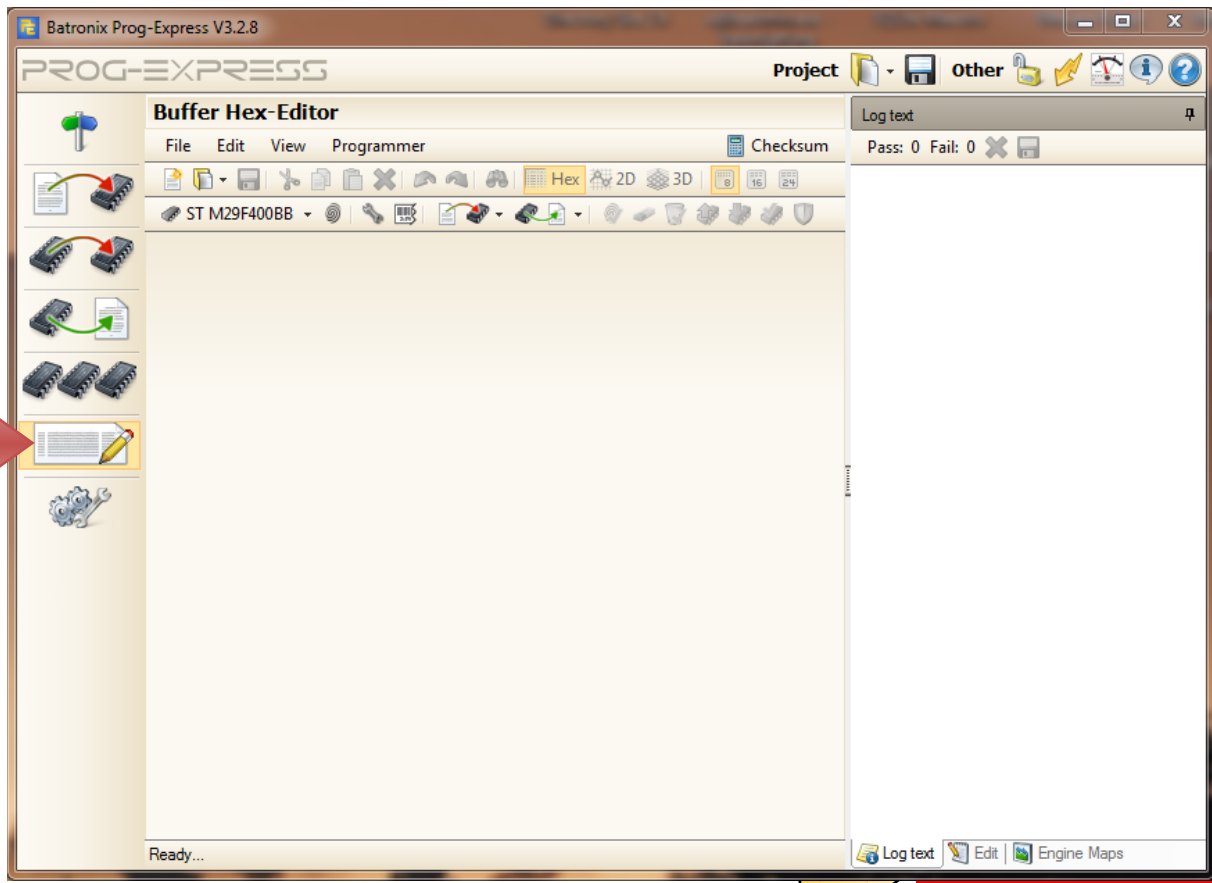


This message confirms successful activation. Now you can start using the Chip Tuner.

## Using the new tools

You might be wondering: What's new?

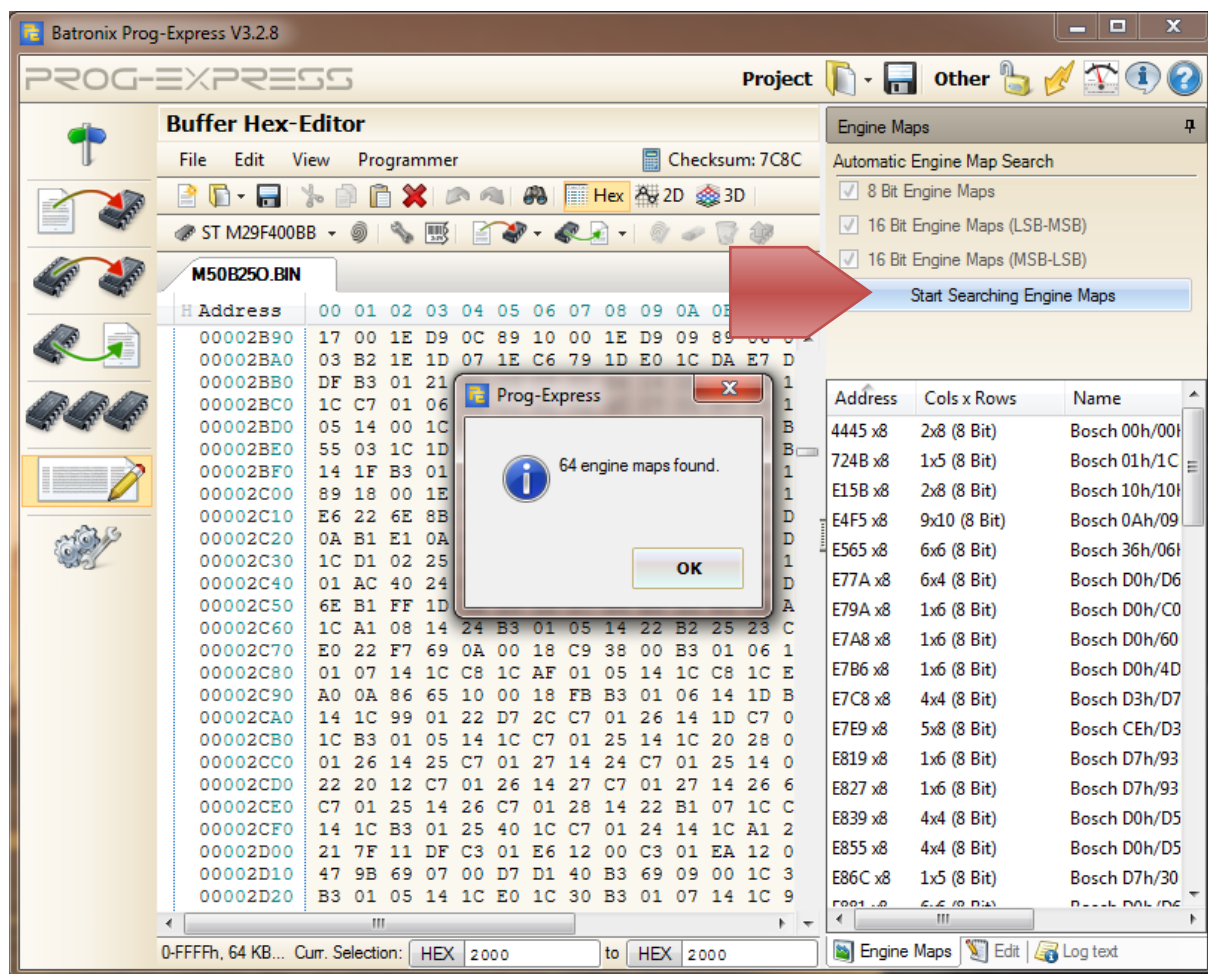
This exact question is answered on the following pages. The first thing you will notice is that your module is now active in the add-on modules page you are already familiar with. But since this is rather unspectacular, we refer direct to the expanded functionality in the Hex Editor page.



A few examples follow in order to explain the expanded functionality.

## NEW: Parameter fields

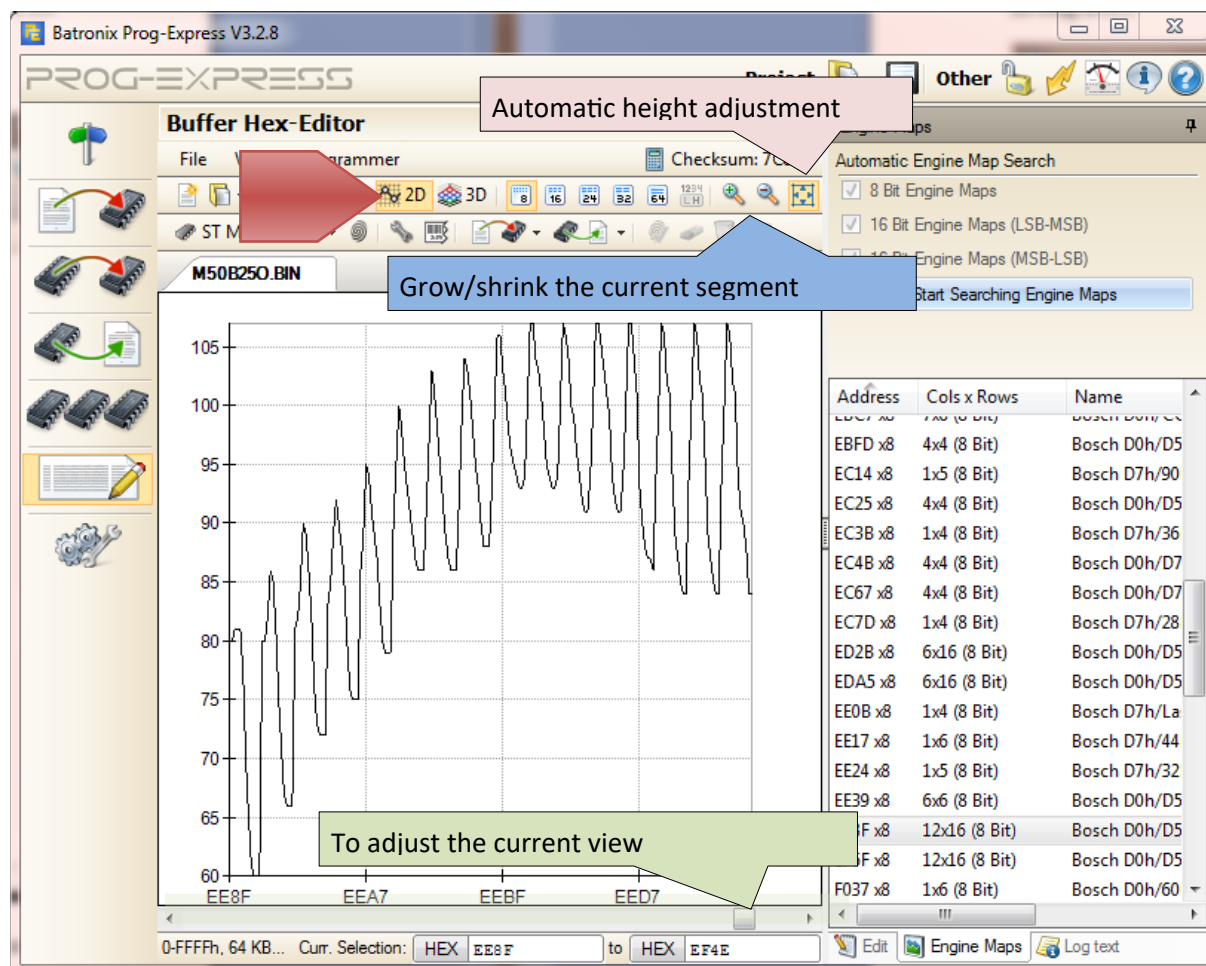
The Chip Tuner helps you search for parameter fields. The Chip Tuner uses methods from the field of artificial intelligence to detect parameter fields. The algorithm uses typical characteristics to detect the parameter fields. The big advantage is that this method works independently of the vehicle manufacturer or model. Please note that it is possible to detect invalid parameter fields, or too many or too few.



The technical knowledge of the user is still required in order to decide if the detected parameter fields were recognized properly and to determine what purpose they fulfil. The Chip Tuner adds 2D and 3D views of the data to the Prog-Express program to make it easier for the user to make this decision.

## 2D View

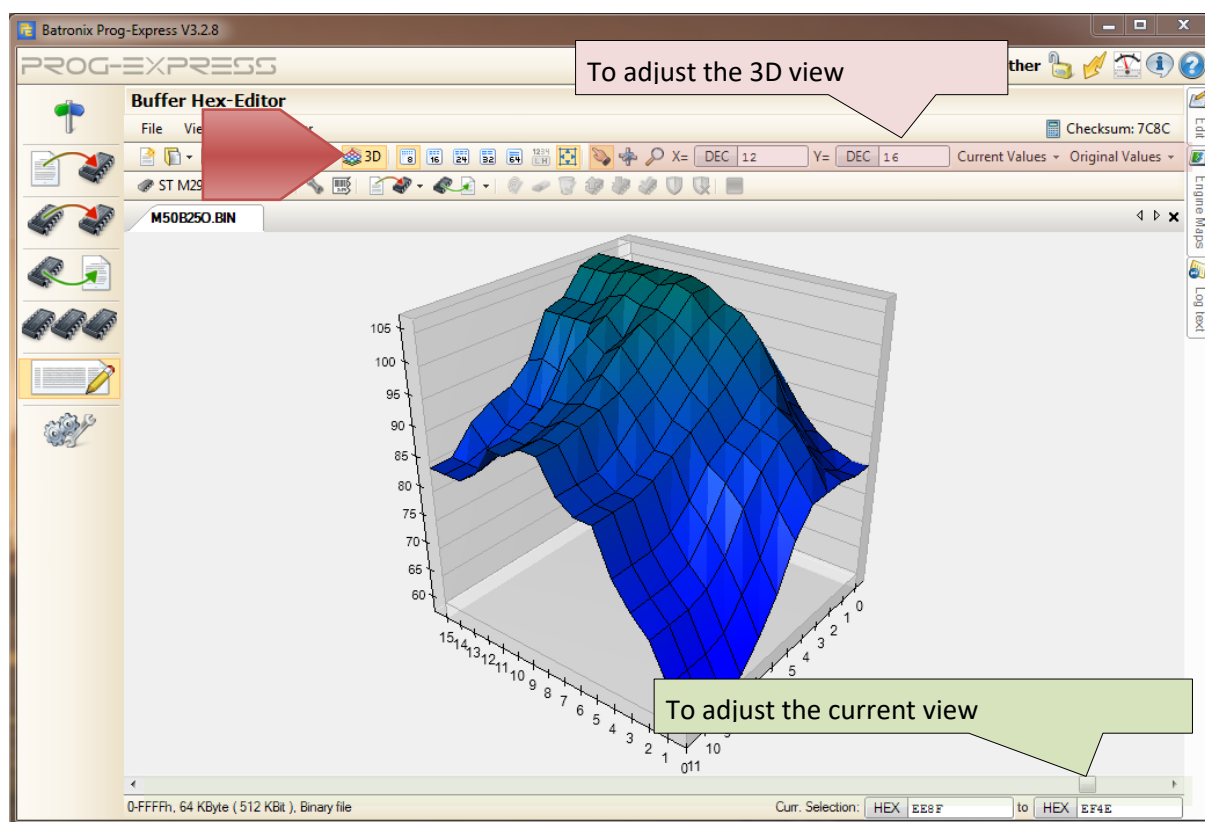
Some parameter fields are best recognized and viewed as 2D diagrams. If a potential parameter field is selected from the list of detected parameter fields, then the corresponding data is automatically selected in the hex editor. Then you can click on 2D view in order to view the parameter field as a 2D diagram.



In this view you can scroll through the entire file using the scroll bar below the diagram. Experienced users are also able to find the parameter fields in the file quickly using this view. You can use the data size setting to adjust the size of the nodes in the view. You can grow or shrink the section you are viewing using the zoom function.




### 3D View

The Chip Tuner features a configurable 3D view for parameter fields which are best viewed in 3D.



A setting for the 3D view can be found in the toolbar. The first 3 buttons control the behaviour of the diagram when you hold the mouse button and move the mouse over the diagram.

These are:


-  = move
-  = rotate
-  = grow/shrink (zoom)

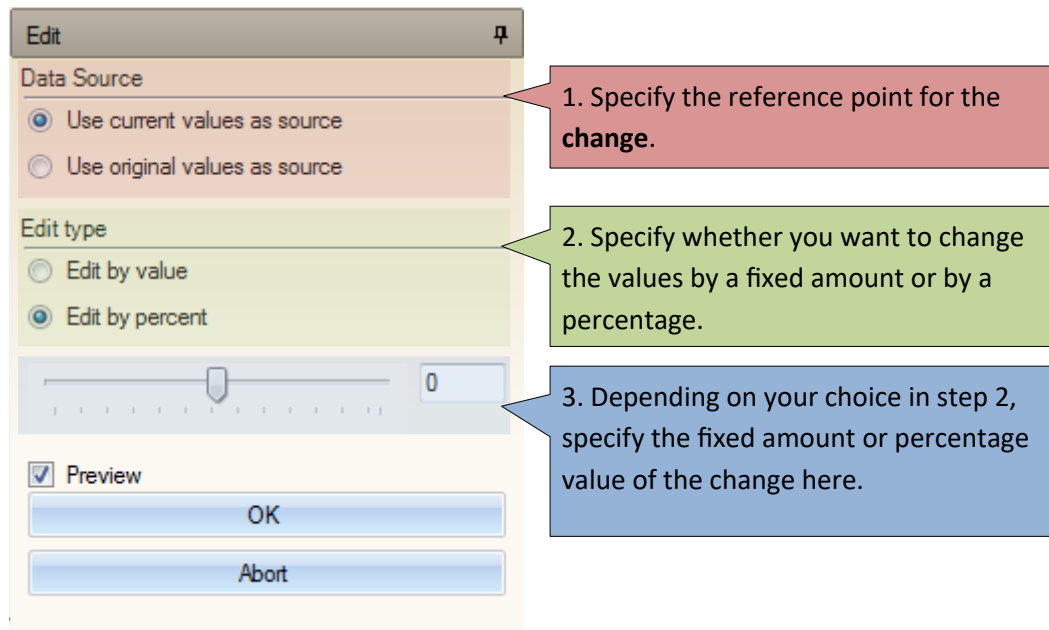
Only one tool can be active at any one time. This is indicated by highlighting.

You can specify the number of points for the diagram x and y axes in the corresponding X-Y input fields. It is best to play around with this setting a bit to familiarize yourself with it.

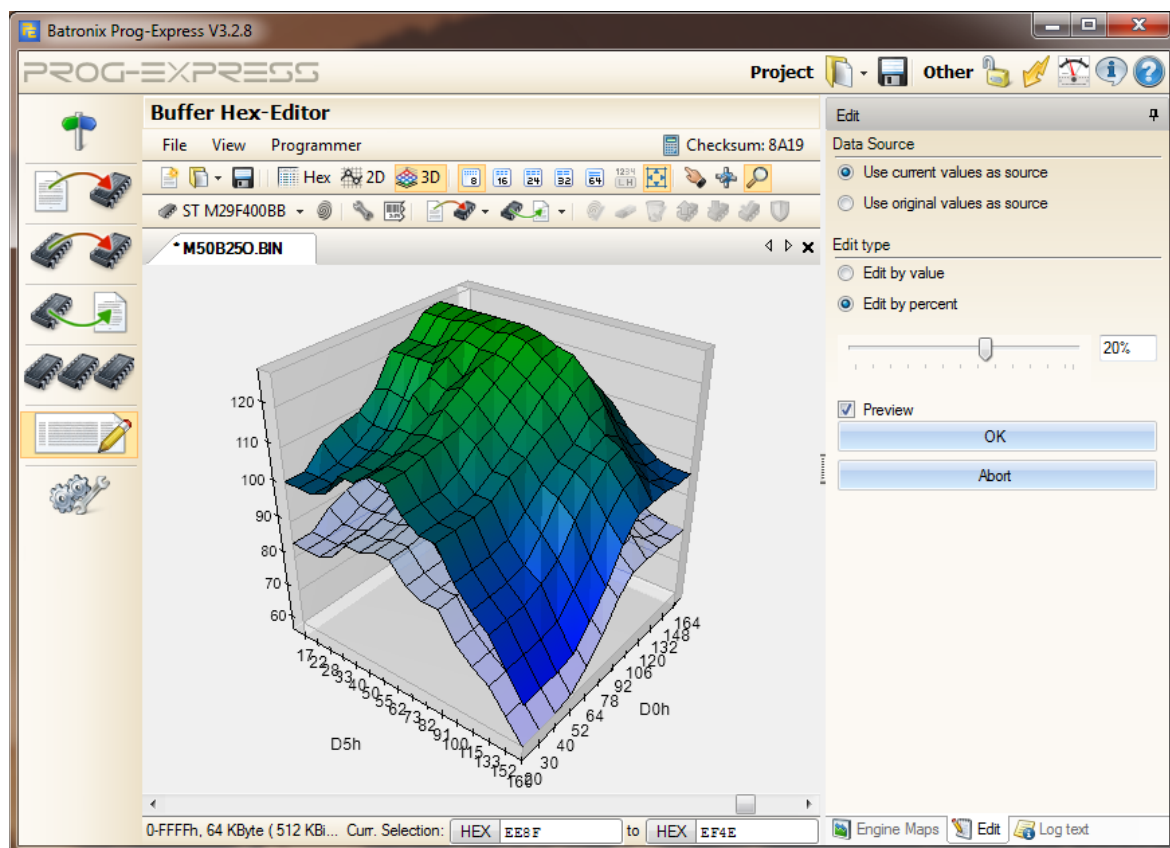


## Editing the parameter fields

Parameter fields can be edited easily in all views using the  edit window.



The data can be edited in all views (Hex, 2D, 3D). Please follow the 3 steps shown in order to make your changes. Your intended changes are shown in real time in the active view if Preview is checked. Click on **“OK”** to apply the changes.





In the 3D view, the original values are translucent and the current values are displayed normally. In the 3D view menu, you can adjust the exact presentation of the current and original value planes to suit your requirements.

## Appendices

### Contact Information

Mail: **Batronix GmbH & Co. KG**  
Handelsweg 16  
24211 Preetz

Fax: +49 4342 90786-0

Email: [service@batronix.com](mailto:service@batronix.com)